

PROVIDING FAMILY FOSTER CARE THROUGH THE LOCAL CHURCH

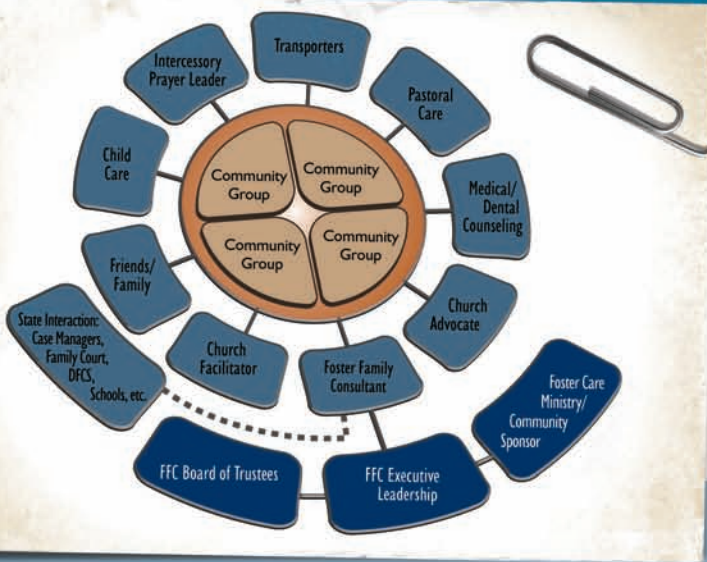


OUR MODEL

Can we change the way foster care is done in this country? Is it possible to break the cycle of abuse and neglect by providing nurturing and loving homes for the children in our community who need them?

FaithBridge Foster Care believes that we can. The answer to the problem lies in a comprehensive foster care delivery model called the Community of CareSM.

Together, we can provide safe, stable homes for foster children and provide a community-wide support system for foster families and biological families.



FaithBridge works with local churches to create a unique small group network, called the Community of Care, which provides foster families with unparalleled support and resources.

Each Community of Care consists of a network of services for foster families and foster children. At the center of each Community of Care are four community groups—each has four foster families and one or more extended families for respite. The community groups are surrounded by a coordinated team of trained volunteers and supported by the local church.

Experience has shown that foster children and families do best when they live in a supportive, stable and stimulating community environment. Children placed with foster families who are surrounded by a loving, local church community have a greater chance of success.

WHAT IS THE COMMUNITY OF CARESM?

With FaithBridge Foster Care's unique Community of CareSM model, foster families are assured of having the physical, emotional and spiritual resources they need to nurture the children in their care. Prior to being placed with a foster child, foster parents receive training in child development, family relationships, teaching social skills, behavior management and a biblical model for families.

When a foster child enters the community, a team of volunteers acts as a support system to the foster family. They help the family find resources, such as clothes and toys, and act as an extended family, providing respite services, mentoring, special recreation and extra-curricular activities.

HOW DOES IT WORK?

THE COMMUNITY OF CARE

The Community of Care is a comprehensive foster care delivery model that provides unparalleled support for foster families. Essential to the Community of Care is a network of volunteers and professionals who help ensure the best possible care for children.



Weekend Relief Families – Weekend relief families allow foster parents a break from their responsibilities, taking care of both foster and biological children so that parents can recharge and reconnect.

Transporters – Volunteers assist with transportation of foster children to and from appointments and activities of all types, ranging from medical and dental to visits with their biological families.

Pastoral Care – Foster families have access to and often require pastoral care during the foster care process. Ranging from home visitation to formal counseling, pastoral care often includes listening, supporting, encouraging and praying.

Medical/Dental Counseling – Foster children must receive ongoing medical and dental care, including an initial check-up upon placement into a foster home. Medical and dental professionals are an important part of each child's care team.

Church Advocate – The church advocate is a ministry leader within the local church who helps to identify, recruit, orient and disciple church members as they minister to foster families and children.

Church Facilitator - The church facilitator works to coordinate the network of volunteers and material support of foster families and community groups.

Friends/Family – Friends and family lend personal support to foster families, providing welcoming ears, helping hands and prayers as needed.

Child Care – Child care volunteers assist with babysitting for foster children and are trained to understand their unique needs and demands.

Intercessory Prayer Leader – Prayer leaders develop a prayer support strategy for the Community of Care, activate prayer teams and regularly communicate prayer needs with those teams.

Foster Family Consultant – The Foster Family Consultant helps coordinate care and services for foster children and families. On call 24 hours a day, seven days a week, consultants ensure that foster children and foster families have all they need. The Foster Family Consultant also handles all interaction with state agencies, so that foster families can focus on loving and nurturing the child(ren) in their care.

Each Community of Care is supported by the FFC Board of Trustees, executive leadership team and a foster care ministry/community sponsor that provides ongoing vision, ministry support and counsel to the entire ministry network.